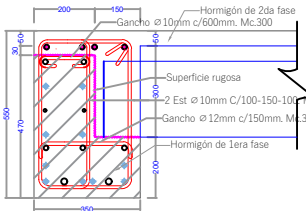
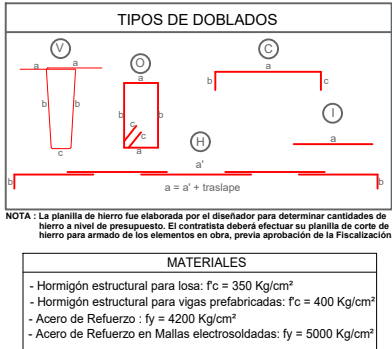
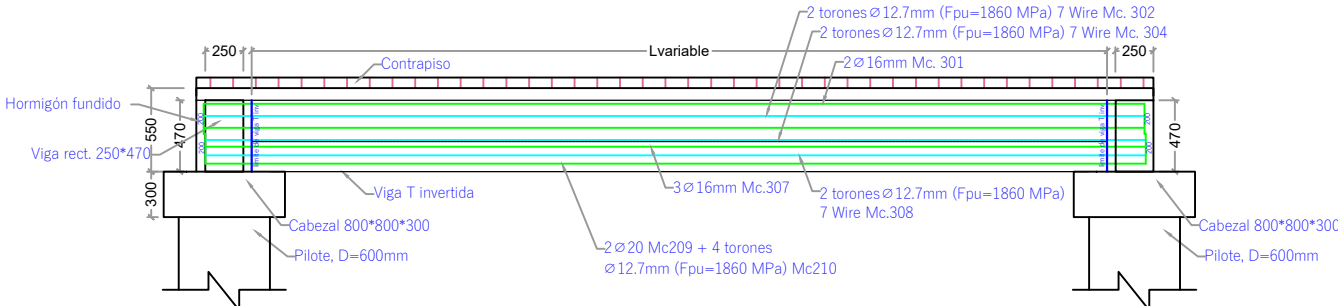


DETALLE DE ARMADURA EN SECCIÓN TRANSVERSAL Y LONGITUDINAL
ESC. 1-25

Viga Prefabricada L



- 4 Ø 16mm (Acero colocado en obra). Mc.311
- 2 Ø 16mm. Mc.301
- 2 torones Ø 12.7mm (Fpu=1860 MPa) 7 Wire. Mc.302
- 2 Ø 10mm. Mc.303
- 2 torones Ø 12.7mm (Fpu=1860 MPa) 7 Wire. Mc.304
- 3 Ø 16mm. Mc.307
- 2 torones Ø 12.7mm (Fpu=1860 MPa) 7 Wire. Mc.308
- 2 Ø 20mm (L=200cm C/extremo). Mc.309
- 4 torones Ø 12.7mm (Fpu=1860 MPa) 7 Wire, 2 debonding L=150cm C/extremo. Mc.310



NOTAS GENERALES

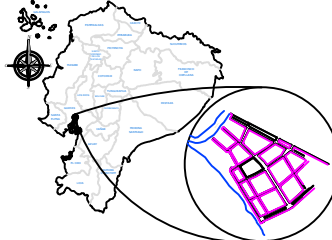
- Todas las medidas están en milímetros (mm).
- Las cotas en metros (m).
- Las medidas prevalecen sobre la escala del dibujo
- Las longitudes, medidas y cotas deberán ser verificadas por el constructor

GOBIERNO AUTÓNOMO
DESCENTRALIZADO
ILUSTRE MUNICIPALIDAD DEL
CANTÓN DAULE



DR. WILSON CAÑIZARES VILLAMAR
ALCALDE
ADMINISTRACIÓN 2023 -2027

UBICACIÓN



PROYECTO:
CONSTRUCCIÓN DEL MALECÓN EN LA
PARROQUIA URBANA SATELITE LA
AURORA

ELABORADO POR:

ARO. FERNANDO SAN LUCAS MACIAS
DIRECTOR GENERAL DE DESARROLLO
Y ORDENAMIENTO TERRITORIAL

REVISADO POR:

ING. JAVIER PRIETO LAINA
SUBDIRECTOR DE CONSTRUCCION Y
MANTENIMIENTO
APROBADO POR:

ING. ÁNGEL TAPE VELIZ
DIRECTOR GENERAL DE OBRAS
PÚBLICAS

CONTIENE:

SECCIÓN TRANSVERSAL Y LONGITUDINAL DE
VIGA T INVERTIDA, CANTIDADES DE
HORMIGÓN, ACERO DE REFUERZO, ACERO
DE TORONES .

ESCALA:

indicada

CÓDIGO

E-F1-M8

FECHA:

MAYO 2025

12 5-10

| FASE 1 | | | | | | | | | | | | | | | |
|--|------|------|-------------|---------|-----------------|-----------------------|------|----------------|------|--------------|--------|---|-------|------------|--|
| MODULO 8 | | | | | | | | | | | | | | | |
| VIGA L | | | | Codigo: | | Viga L-M8-01-03 | | Longitud prom= | | 1750 mm | | Cant vigas: | | 4 U | |
| PLANILLA DE HIERRO DE VIGAS (fy=4200 Kg) | | | | | | | | | | | | | | | |
| Mc | Tipo | Φ mm | Espac. (mm) | Cant. | Dimensiones (m) | | | | | Longitud (m) | | Peso (kg) | | Obs | |
| | | | | | a | b | c | d | e | Unidad | Total | Unitario | Total | | |
| 300 | C | 10 | 600 | 3 | 0.06 | 0.17 | 0.06 | | | 0.29 | 0.87 | 0.18 | 0.54 | Gancho | |
| 301 | C | 16 | | 2 | 0.20 | 2.35 | 0.20 | | | 2.75 | 5.50 | 4.34 | 8.68 | | |
| 303 | C | 10 | | 2 | 0.15 | 2.35 | 0.15 | | | 2.65 | 5.30 | 1.63 | 3.27 | | |
| 305a | O | 10 | 100-150-100 | 16 | 0.17 | 0.49 | 0.17 | 0.49 | 0.15 | 1.47 | 23.52 | 0.91 | 14.50 | Estribo *2 | |
| 305b | O | 10 | 100-150-100 | 16 | 0.30 | 0.49 | 0.30 | 0.49 | 0.15 | 1.73 | 27.68 | 1.07 | 17.07 | Estribo *2 | |
| 306 | C | 12 | 150 | 12 | 0.06 | 0.30 | 0.06 | | | 0.42 | 5.04 | 0.37 | 4.47 | Gancho | |
| 307 | C | 16 | | 3 | 0.15 | 2.35 | 0.15 | | | 2.65 | 7.95 | 4.18 | 12.55 | | |
| 309 | C | 20 | | 2 | 0.20 | 2.35 | 0.20 | | | 2.75 | 5.50 | 6.78 | 13.56 | | |
| | | | | | | | | | | | | Total de VIGA L | | 74.10 | |
| | | | | | | | | | | | | Total de vigas codigo Viga L-M8-01-03 | | 296.41 | |
| VIGA L | | | | Codigo: | | Viga L-M8-02-09 | | Longitud prom= | | 5160 mm | | Cant vigas: | | 7 U | |
| PLANILLA DE HIERRO DE VIGAS (fy=4200 Kg) | | | | | | | | | | | | | | | |
| Mc | Tipo | Φ mm | Espac. (mm) | Cant. | Dimensiones (m) | | | | | Longitud (m) | | Peso (kg) | | Obs | |
| | | | | | a | b | c | d | e | Unidad | Total | Unitario | Total | | |
| 300 | C | 10 | 600 | 9 | 0.06 | 0.17 | 0.06 | | | 0.29 | 2.61 | 0.18 | 1.61 | Gancho | |
| 301 | C | 16 | | 2 | 0.20 | 5.76 | 0.20 | | | 6.16 | 12.32 | 9.72 | 19.45 | | |
| 303 | C | 10 | | 2 | 0.15 | 5.76 | 0.15 | | | 6.06 | 12.12 | 3.74 | 7.47 | | |
| 305a | O | 10 | 100-150-100 | 46 | 0.17 | 0.49 | 0.17 | 0.49 | 0.15 | 1.47 | 67.62 | 0.91 | 41.69 | Estribo *2 | |
| 305b | O | 10 | 100-150-100 | 46 | 0.30 | 0.49 | 0.30 | 0.49 | 0.15 | 1.73 | 79.58 | 1.07 | 49.06 | Estribo *2 | |
| 306 | C | 12 | 150 | 35 | 0.06 | 0.30 | 0.06 | | | 0.42 | 14.70 | 0.37 | 13.05 | Gancho | |
| 307 | C | 16 | | 3 | 0.15 | 5.76 | 0.15 | | | 6.06 | 18.18 | 9.56 | 28.69 | | |
| 309 | C | 20 | | 2 | 0.20 | 5.76 | 0.20 | | | 6.16 | 12.32 | 15.19 | 30.38 | | |
| | | | | | | | | | | | | Total de VIGA L | | 189.80 | |
| | | | | | | | | | | | | Total de vigas codigo Viga L-M8-02-09 | | 1328.60 | |
| VIGA L | | | | Codigo: | | Viga L-M8-04 | | Longitud prom= | | 3400 mm | | Cant vigas: | | 2 U | |
| PLANILLA DE HIERRO DE VIGAS (fy=4200 Kg) | | | | | | | | | | | | | | | |
| Mc | Tipo | Φ mm | Espac. (mm) | Cant. | Dimensiones (m) | | | | | Longitud (m) | | Peso (kg) | | Obs | |
| | | | | | a | b | c | d | e | Unidad | Total | Unitario | Total | | |
| 300 | C | 10 | 600 | 6 | 0.06 | 0.17 | 0.06 | | | 0.29 | 1.74 | 0.18 | 1.07 | Gancho | |
| 301 | C | 16 | | 2 | 0.20 | 4.00 | 0.20 | | | 4.40 | 8.80 | 6.94 | 13.89 | | |
| 303 | C | 10 | | 2 | 0.15 | 4.00 | 0.15 | | | 4.30 | 8.60 | 2.65 | 5.30 | | |
| 305a | O | 10 | 100-150-100 | 31 | 0.17 | 0.49 | 0.17 | 0.49 | 0.15 | 1.47 | 45.57 | 0.91 | 28.10 | Estribo *2 | |
| 305b | O | 10 | 100-150-100 | 31 | 0.30 | 0.49 | 0.30 | 0.49 | 0.15 | 1.73 | 53.63 | 1.07 | 33.06 | Estribo *2 | |
| 306 | C | 12 | 150 | 23 | 0.06 | 0.30 | 0.06 | | | 0.42 | 9.66 | 0.37 | 8.58 | Gancho | |
| 307 | C | 16 | | 3 | 0.15 | 4.00 | 0.15 | | | 4.30 | 12.90 | 6.79 | 20.36 | | |
| 309 | C | 20 | | 2 | 0.20 | 4.00 | 0.20 | | | 4.40 | 8.80 | 10.85 | 21.70 | | |
| | | | | | | | | | | | | Total de VIGA L | | 130.99 | |
| | | | | | | | | | | | | Total de vigas codigo Viga L-M8-04 | | 261.98 | |
| VIGA L | | | | Codigo: | | Viga L-M8-05-06 | | Longitud prom= | | 6350 mm | | Cant vigas: | | 6 U | |
| PLANILLA DE HIERRO DE VIGAS (fy=4200 Kg) | | | | | | | | | | | | | | | |
| Mc | Tipo | Φ mm | Espac. (mm) | Cant. | Dimensiones (m) | | | | | Longitud (m) | | Peso (kg) | | Obs | |
| | | | | | a | b | c | d | e | Unidad | Total | Unitario | Total | | |
| 300 | C | 10 | 600 | 11 | 0.06 | 0.17 | 0.06 | | | 0.29 | 3.19 | 0.18 | 1.97 | Gancho | |
| 301 | C | 16 | | 2 | 0.20 | 6.95 | 0.20 | | | 7.35 | 14.70 | 11.60 | 23.20 | | |
| 303 | C | 10 | | 2 | 0.15 | 6.95 | 0.15 | | | 7.25 | 14.50 | 4.47 | 8.94 | | |
| 305a | O | 10 | 100-150-100 | 57 | 0.17 | 0.49 | 0.17 | 0.49 | 0.15 | 1.47 | 83.79 | 0.91 | 51.66 | Estribo *2 | |
| 305b | O | 10 | 100-150-100 | 57 | 0.30 | 0.49 | 0.30 | 0.49 | 0.15 | 1.73 | 98.61 | 1.07 | 60.80 | Estribo *2 | |
| 306 | C | 12 | 150 | 43 | 0.06 | 0.30 | 0.06 | | | 0.42 | 18.06 | 0.37 | 16.03 | Gancho | |
| 307 | C | 16 | | 3 | 0.15 | 6.95 | 0.15 | | | 7.25 | 21.75 | 11.44 | 34.33 | | |
| 309 | C | 20 | | 2 | 0.20 | 6.95 | 0.20 | | | 7.35 | 14.70 | 18.13 | 36.25 | | |
| | | | | | | | | | | | | Total de VIGA L | | 231.21 | |
| | | | | | | | | | | | | Total de vigas codigo Viga L-M8-05-06 | | 1387.28 | |
| VIGA L | | | | Codigo: | | Viga L-M8-08-14-15-16 | | Longitud prom= | | 4300 mm | | Cant vigas: | | 11 U | |
| PLANILLA DE HIERRO DE VIGAS (fy=4200 Kg) | | | | | | | | | | | | | | | |
| Mc | Tipo | Φ mm | Espac. (mm) | Cant. | Dimensiones (m) | | | | | Longitud (m) | | Peso (kg) | | Obs | |
| | | | | | a | b | c | d | e | Unidad | Total | Unitario | Total | | |
| 300 | C | 10 | 600 | 8 | 0.06 | 0.17 | 0.06 | | | 0.29 | 2.32 | 0.18 | 1.43 | Gancho | |
| 301 | C | 16 | | 2 | 0.20 | 4.90 | 0.20 | | | 5.30 | 10.60 | 8.37 | 16.73 | | |
| 303 | C | 10 | | 2 | 0.15 | 4.90 | 0.15 | | | 5.20 | 10.40 | 3.21 | 6.41 | | |
| 305a | O | 10 | 100-150-100 | 39 | 0.17 | 0.49 | 0.17 | 0.49 | 0.15 | 1.47 | 57.33 | 0.91 | 35.35 | Estribo *2 | |
| 305b | O | 10 | 100-150-100 | 39 | 0.30 | 0.49 | 0.30 | 0.49 | 0.15 | 1.73 | 67.47 | 1.07 | 41.60 | Estribo *2 | |
| 306 | C | 12 | 150 | 29 | 0.06 | 0.30 | 0.06 | | | 0.42 | 12.18 | 0.37 | 10.81 | Gancho | |
| 307 | C | 16 | | 3 | 0.15 | 4.90 | 0.15 | | | 5.20 | 15.60 | 8.21 | 24.62 | | |
| 309 | C | 20 | | 2 | 0.20 | 4.90 | 0.20 | | | 5.30 | 10.60 | 13.07 | 26.14 | | |
| | | | | | | | | | | | | Total de VIGA L | | 161.66 | |
| | | | | | | | | | | | | Total de vigas codigo Viga L-M8-08-14-15-16 | | 1778.29 | |
| VIGA L | | | | Codigo: | | Viga L-M8-10-11-12-07 | | Longitud prom= | | 6100 mm | | Cant vigas: | | 10 U | |
| PLANILLA DE HIERRO DE VIGAS (fy=4200 Kg) | | | | | | | | | | | | | | | |
| Mc | Tipo | Φ mm | Espac. (mm) | Cant. | Dimensiones (m) | | | | | Longitud (m) | | Peso (kg) | | Obs | |
| | | | | | a | b | c | d | e | Unidad | Total | Unitario | Total | | |
| 300 | C | 10 | 600 | 11 | 0.06 | 0.17 | 0.06 | | | 0.29 | 3.19 | 0.18 | 1.97 | Gancho | |
| 301 | C | 16 | | 2 | 0.20 | 6.70 | 0.20 | | | 7.10 | 14.20 | 11.21 | 22.41 | | |
| 303 | C | 10 | | 2 | 0.15 | 6.70 | 0.15 | | | 7.00 | 14.00 | 4.32 | 8.63 | | |
| 305a | O | 10 | 100-150-100 | 55 | 0.17 | 0.49 | 0.17 | 0.49 | 0.15 | 1.47 | 80.85 | 0.91 | 49.85 | Estribo *2 | |
| 305b | O | 10 | 100-150-100 | 55 | 0.30 | 0.49 | 0.30 | 0.49 | 0.15 | 1.73 | 95.15 | 1.07 | 58.66 | Estribo *2 | |
| 306 | C | 12 | 150 | 41 | 0.06 | 0.30 | 0.06 | | | 0.42 | 17.22 | 0.37 | 15.29 | Gancho | |
| 307 | C | 16 | | 3 | 0.15 | 6.70 | 0.15 | | | 7.00 | 21.00 | 11.05 | 33.15 | | |
| 309 | C | 20 | | 2 | 0.20 | 6.70 | 0.20 | | | 7.10 | 14.20 | 17.51 | 35.02 | | |
| | | | | | | | | | | | | Total de VIGA L | | 223.01 | |
| | | | | | | | | | | | | Total de vigas codigo Viga L-M8-10-11-12-07 | | 2230.07 | |
| VIGA L | | | | Codigo: | | Viga L-M8-13 | | Longitud prom= | | 6800 mm | | Cant vigas: | | 1 U | |
| PLANILLA DE HIERRO DE VIGAS (fy=4200 Kg) | | | | | | | | | | | | | | | |
| Mc | Tipo | Φ mm | Espac. (mm) | Cant. | Dimensiones (m) | | | | | Longitud (m) | | Peso (kg) | | Obs | |
| | | | | | a | b | c | d | e | Unidad | Total | Unitario | Total | | |
| 300 | C | 10 | 600 | 12 | 0.06 | 0.17 | 0.06 | | | 0.29 | 3.48 | 0.18 | 2.15 | Gancho | |
| 301 | C | 16 | | 2 | 0.20 | 7.40 | 0.20 | | | 7.80 | 15.60 | 12.31 | 24.62 | | |
| 303 | C | 10 | | 2 | 0.15 | 7.40 | 0.15 | | | 7.70 | 15.40 | 4.75 | 9.49 | | |
| 305a | O | 10 | 100-150-100 | 61 | 0.17 | 0.49 | 0.17 | 0.49 | 0.15 | 1.47 | 89.67 | 0.91 | 55.28 | Estribo *2 | |
| 305b | O | 10 | 100-150-100 | 61 | 0.30 | 0.49 | 0.30 | 0.49 | 0.15 | 1.73 | 105.53 | 1.07 | 65.06 | Estribo *2 | |
| 306 | C | 12 | 150 | 46 | 0.06 | 0.30 | 0.06 | | | 0.42 | 19.32 | 0.37 | 17.15 | Gancho | |
| 307 | C | 16 | | 3 | 0.15 | 7.40 | 0.15 | | | 7.70 | 23.10 | 12.15 | 36.46 | | |
| 309 | C | 20 | | 2 | 0.20 | 7.40 | 0.20 | | | 7.80 | 15.60 | 19.24 | 38.47 | | |
| | | | | | | | | | | | | Total de VIGA L | | 246.55 | |
| | | | | | | | | | | | | Total de vigas codigo Viga L-M8-13 | | 246.55 | |